

Time to  
take the step  
towards  
living your dream





Now you have  
all the reasons to  
be delighted

Whitecoral presents

# Stepping Stone

at Hoskote, East Bangalore

- A completely packaged residential enclave that houses 168 apartments and an array of facilities & luxury amenities. With prices to surprise, Stepping Stone is slated to be an ideal choice for first time home buyers and it also opens up window to a wonderful investment opportunity.
- Stepping Stone offers well spaced out homes in 2 and 3 BHK configurations with several lifestyle additions - ranging from 940 sft to 1400 sft - that certainly takes the concept of value homes several notches higher... or redefining affordable living, shall we say?
- Proximity to Industrial Areas in and around Whitefield, ITPL, EPIP Zone and great connectivity to K R Puram, Marathahalli, International Airport, upcoming Aero SEZ will allow Stepping Stone residents to live a quality life close to work place.

WHITECORAL  
**Stepping  
Stone**





Perspective view - evening

WHITECORAL  
**Stepping  
Stone**







# Offering Amenities

to ensure modern life,  
well-being & convenience

- Lifestyle:
  - Clubhouse with Gym & Indoor Games facilities
  - Swimming Pool
  - Pool-side Lounge
  - Landscaped Garden & Shrubs
  - Birds Bath
- Outdoor Activities:
  - Lawn Tennis
  - Badminton Court
  - Basketball Court
  - Cricket Pitch, Kids Play Area
- Utilities:
  - Play School
  - ATM
  - Medical Store
  - Hopcoms Store





Perspective view - day

WHITECORAL  
**Stepping  
Stone**





Entrance View



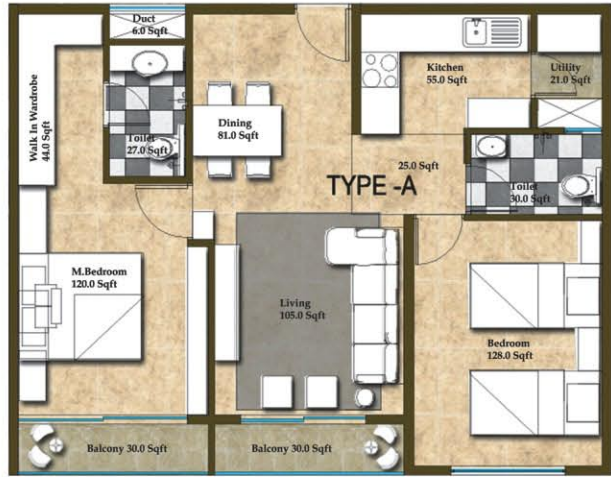
Isometric View



WHITECORAL  
**Stepping  
Stone**



# Typical Floor Plans



SBA - 1040 Sft



SBA - 1020 sft



SBA - 1240 sft



SBA - 1040 sft



SBA - 940 sft



SBA - 1120 sft



Living Room



Master Bedroom



Kids Bedroom

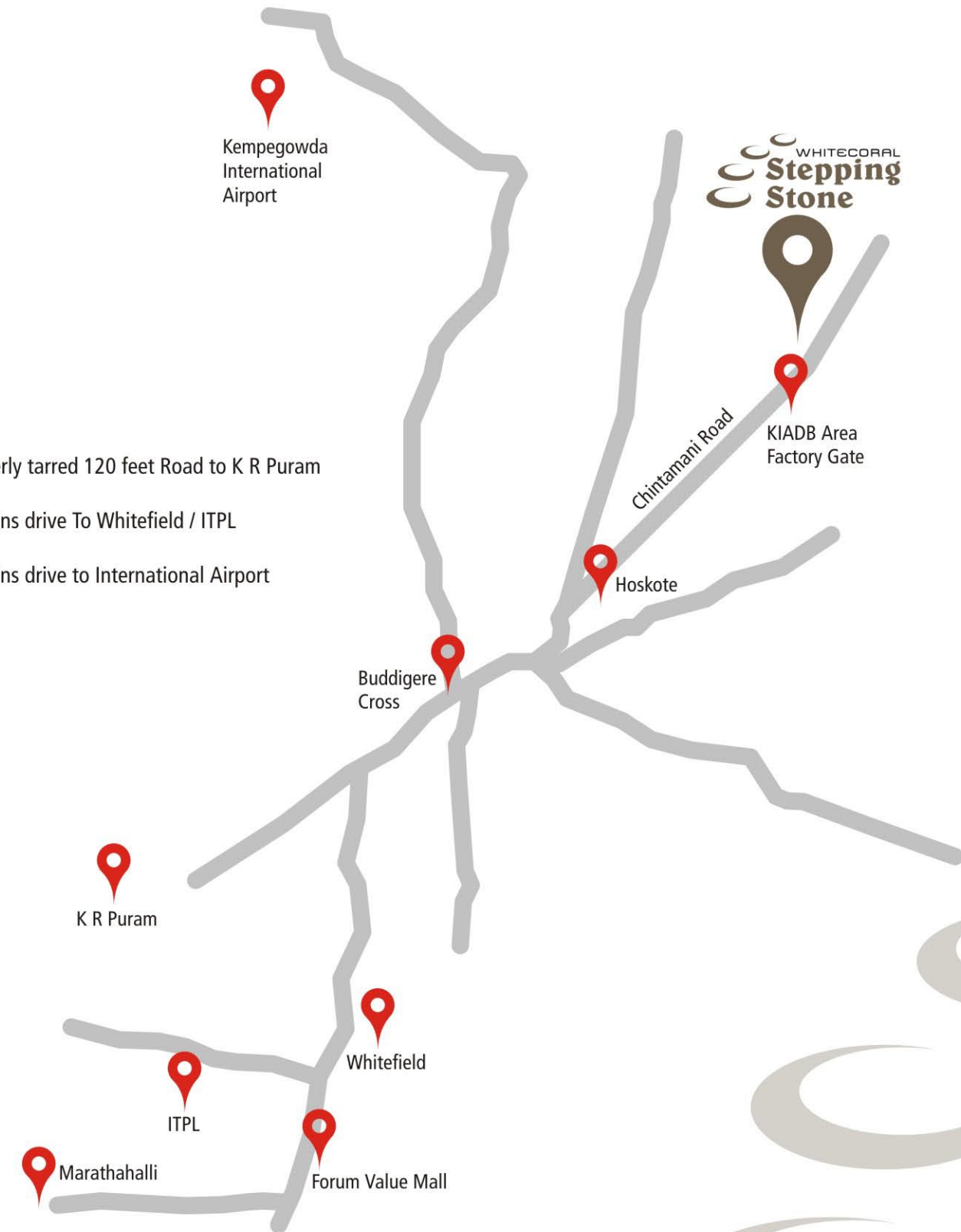


Toilet



A wonderful  
location  
that's  
well connected

- Properly tarred 120 feet Road to K R Puram
- 15 mins drive To Whitefield / ITPL
- 25 mins drive to International Airport







## WHITECORAL CONSTRUCTIONS LLP

[www.whitecoral.co.in](http://www.whitecoral.co.in)

+91. 90360. 10585

+91. 80. 4122. 3668

[info@whitecoral.co.in](mailto:info@whitecoral.co.in)